



# Knox Presbyterian Church

*Theedford*



**OUR MISSION**  
*At Knox Presbyterian Church,  
we seek to glorify the Lord Jesus Christ  
and be led by the Holy Spirit,  
in worship, in daily life, and in serving God  
as we serve our community and beyond*

Knox Presbyterian Church, Box 56 Theedford ON N0M 2N0

[www.kpcthedford.com](http://www.kpcthedford.com)

Pastor: Rev. Dr. Christine O'Reilly 519-243-3862 (home/office)  
519-476-4086 (cell) [corly@execulink.com](mailto:corly@execulink.com)

Musicians: C. Minielly, B. Fuller, M. Parker, H. Hayter,  
J. Thachuk, J. Stewardson, C.O'Reilly



If you were arrested for being a Christian,  
would there be enough evidence to convict you?

**Questioned for Christ**  
**LENT ONE**

Sunday, February 22, 2015  
**Questioned for Christ**  
**LENT ONE**  
**“A Question of Priorities”**

*\* please stand as you are able*

**THE CHURCH GATHERS**

Welcome, Announcements, Greeting

We Prepare to Worship...in story

We Prepare to Worship...in song

*“Here I am to Worship” (Hughes)*

*“You Are My All in All ” (Jernigan)*

We Prepare to Worship...in prayer *the Bible is carried in*

**TO WORSHIP GOD**

**Call to Worship and Lent Cross** *“Questions Jesus Asked”*

One: Jesus asked questions; questions that made people think, questions that invited His followers into a deeper relationship and commitment to Him.

**ALL: Lord, You ask questions of us, too.**

One: “Why do you keep calling Me ,” Lord, Lord’ when you don’t do what I say?”

**ALL: Lord, Lord...this question makes us think.**

**This question asks much of us.**

*The first Lent Cross candle is extinguished*

\* Response *“Lord Have Mercy” (Merkel)*

\*Prayer of Approach and Confession, The Lord’s Prayer  
God’s Grace and our Response

\*Hymn of Praise *“Jesus, What a Friend” (Chapman)*

We Profess What We Believe *The Apostles’ Creed*

**GOD SPEAKS TO US**

Children’s Time

Song *“We Will Follow Jesus/Somlandela” (Traditional)*

**We Prepare to Hear God’s Word**

Scriptures *John 12:1-11 (p. 873)*

Drama *“Mary is Questioned for Christ”*

Message

**WE RESPOND IN FAITH**

\*In Song *“Lord of All Power” (Winslow)*

Prayers of the People

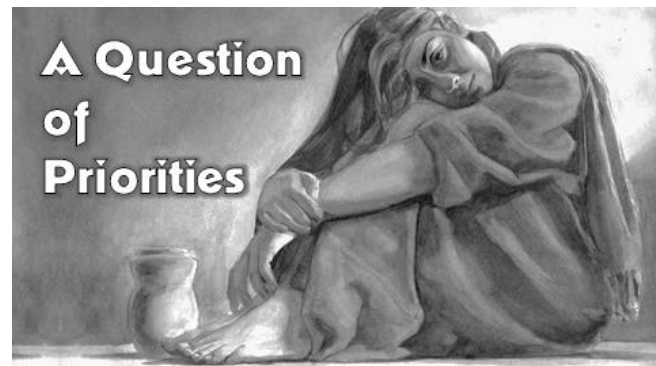
Offering and Dedication

**WITH GRATEFUL HEARTS, WE GO TO SERVE**

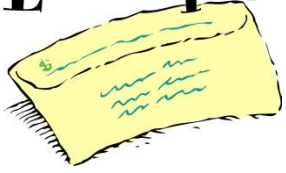
\*Hymn *“Jesus, All for Jesus” (Mark/Atkinson )*

\*The Lord Sends Us with His Blessing

\*Song of Blessing *“Go Now in Peace”*



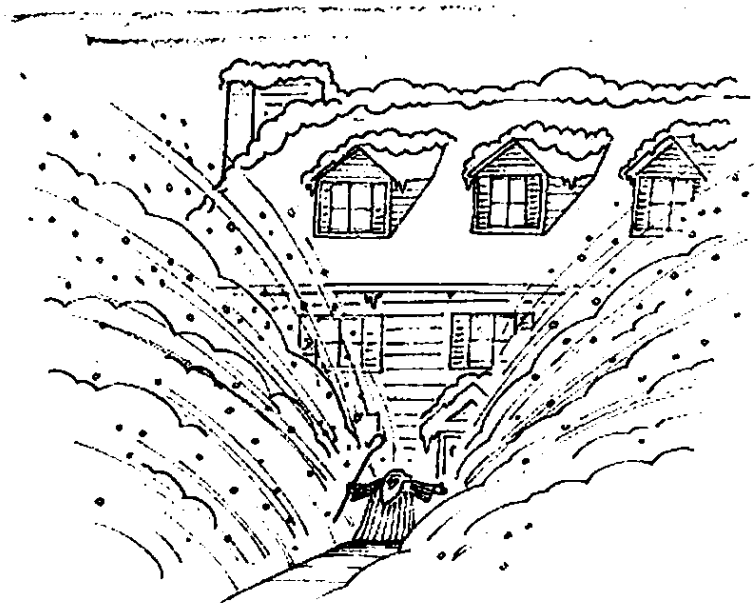
## Offering Envelopes



If you would like offering envelopes, an easy way to keep track of your financial support and receive income tax receipts, please let Bonnie Brand, our treasurer know. You can e-mail her at [bonnie\\_brand@hotmail.com](mailto:bonnie_brand@hotmail.com) or by phone 519-264-1868.



**AN EXTRA PLACE AT THE TABLE**  
Pancake Mix and syrup



Moses in Canada

## GOOD MORNING!

*Welcome to Knox Church; we are thankful you have come this morning to worship. We hope your faith be encouraged, your mind enriched, your heart embraced in the truth and grace of God.*

*This morning we have begun the season of "Lent", the 40 days of preparation before Easter. We prepare ourselves by looking at our commitment to and relationship with Jesus Christ as Lord and Saviour. Our sermon series for the season is **Questioned for Christ** and will look at the people near Jesus on His way to the cross. Inspired by the question "If you were arrested for being a Christian, would there be enough evidence to convict you?" , we will see the story come to life with a weekly drama, and a message that takes this into our own lives and relationship with Jesus. This morning, Mary of Bethany helps us look at*



## A Word About Worship....



WELCOME

*You are welcome here. Really. You are among friendly people who care, who aren't perfect, but are on a journey of faith. If you are a guest, we don't expect you to give an offering; if you wish to do so, we're grateful. Join us for refreshments downstairs after worship. We hope you are blessed by being here, and that you'll come again!*



**KID CONNECTION** welcomes all children! Come up front for the children's time; parents welcome, too! Then join the group and head downstairs after the children's song. Children will rejoin us for the closing song. Feel free to accompany your child downstairs and then return for the message once they are settled.

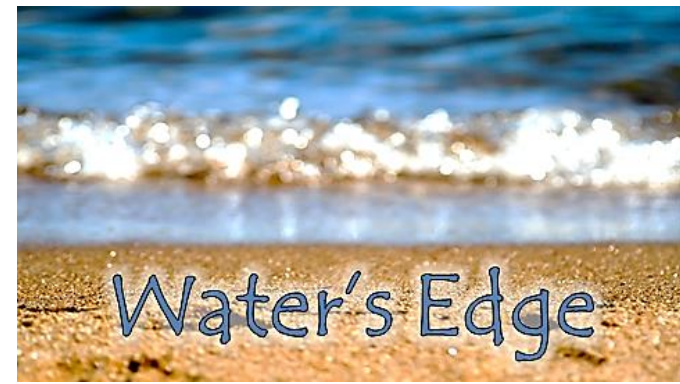
**Washrooms** are at the back entry and in the downstairs hall; **baby change stations** are located in the back entry washroom and just off the front entryway.



We have hearing assistance devices available. Just ask a greeter or the staff at the sound booth at the back.

Please join us for refreshments and conversation following worship! Head downstairs after the service – you'll be welcome! More information about worship and our church on the next page, and at our website

- Orange juice and bottled water are available on the back table by the front entry door.



A new worship opportunity!  
Wednesday nights, 7-8 p.m.

at Chris & Jesse's home, 7745 Alfred Street in Port Franks

Water's Edge is a worship opportunity we hope will offer something to those who:

- \*want a more intimate opportunity for worship,
- \* those who cannot attend worship on Sunday mornings (work, family commitments, school responsibilities),
- \* those seeking a less formal gathering for worship (not that KPC is very formal!)
- \*those seeking to understand and explore Christianity within a smaller group.

It's called Water's Edge because that is where people often gathered to hear Jesus, and be with Him; the 'water's edge' is a place of reflection, of spiritual awareness, for many people; and, on a geographical level .... because Port Franks is on the shores of Lake Huron! Looking forward to this new opportunity to worship and to serve.

Water's Edge will include some music, prayer and a reprise of the message from the previous Sunday.



Hospitality important to everyone who comes to KPC!

#### NOTES FOR GREETERS:

- Please arrive at church at about 8.45 a.m.
- Door greeters: please take new guests into the sanctuary and help them find a seat, to ensure they feel comfortable and welcome, with no fear about 'taking someone's seat'.

#### THIS WEEK:

Doors: Ron & Mary McCordic Glenn & Helen McIntyre

Nursery: Marie Clark

Children's Greeter: Brenda Gregg

Youth Group Snack: Helen Hayter



[www.kpcthedford.com](http://www.kpcthedford.com)

#### ***OUR MISSION***

***At Knox Presbyterian Church,  
we seek to glorify the Lord Jesus Christ  
and be led by the Holy Spirit,  
in worship, in daily life, and in serving God  
as we serve our community and beyond***

this week @ church

**Tuesday 1.30 p.m. Knox Knitters**

**4.00 p.m. Youth Group**

**7.00 p.m. Grief Share (downstairs)**

**Board (sanctuary)**

**Wednesday 7.00 p.m. Water's Edge**

**Sunday 9.30 a.m. Worship and Kid Connection**



#### **"A Question of Conviction"**

*A police interrogation of Nicodemus*



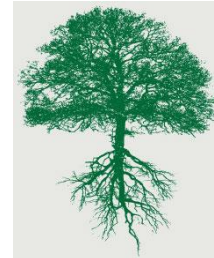
## LENT QUESTION:

**If you were arrested for being a Christian,  
would there be enough evidence to convict you?**

*Join us for a special series of worship services for Lent and Easter called **Questioned for Christ**. Each week we'll ask the question "What priority do we give Christ in our lives?" Each service in the series focuses on people in the story of Jesus Christ who are questioned concerning their relationship with Him, and their commitment to Him. With short dramas, music, and messages on each character presented, we'll explore what the question means for us today as followers of Jesus.*

*The children's series will focus on the cross – with many different crosses that tell the story of faith and God's love for us.*

*Please pick up your Lent material today, as Lent begins on Wednesday!*



## Church Membership

*Establishing Roots in  
a faith community!*

Come, explore and discover more about Knox Church :  
what we believe,  
what we're about,  
what it means to profess your faith in Christ  
and become a member of our church family.

Pastor Chris will lead a discussion about church membership on  
RESCHEDULED TO Sunday, March 22<sup>nd</sup> after the coffee hour.

In this meeting,

- ✓ you'll get to know others,
- ✓ watch a video,
- ✓ gain some information about KPC and the Presbyterian Church,
- ✓ find out the basics of what we believe,
- ✓ learn some of KPC's history, our mission statement, who we are, what we're about and where we believe the Lord is leading us.
- ✓ learn why membership matters

You are not required to make a commitment to membership at this class. .this is the first step to learn more. After the class, there will be an invitation to consider church membership, and you'll be given the questions and commitment church members are asked to make.

**ALL ARE WELCOME!**